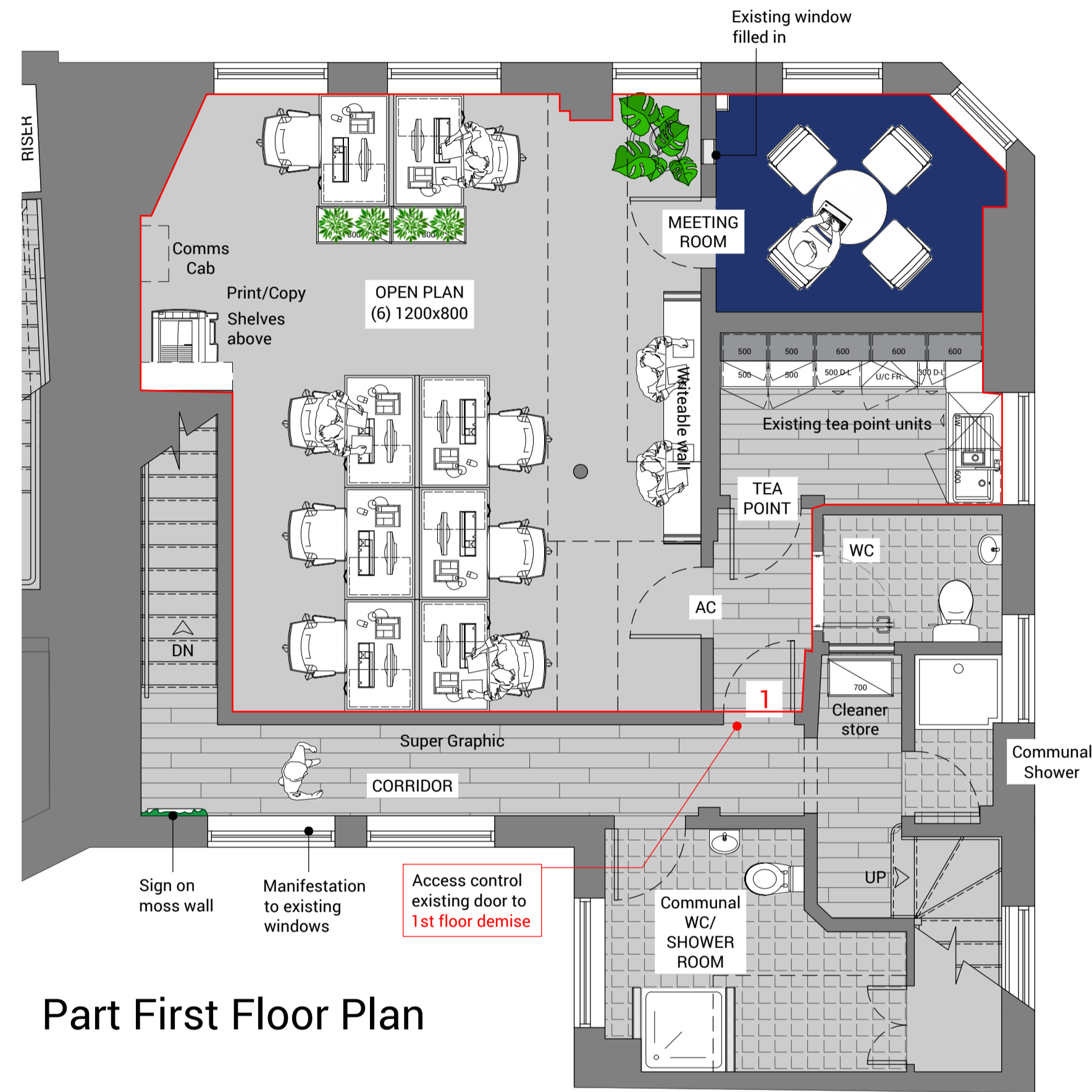
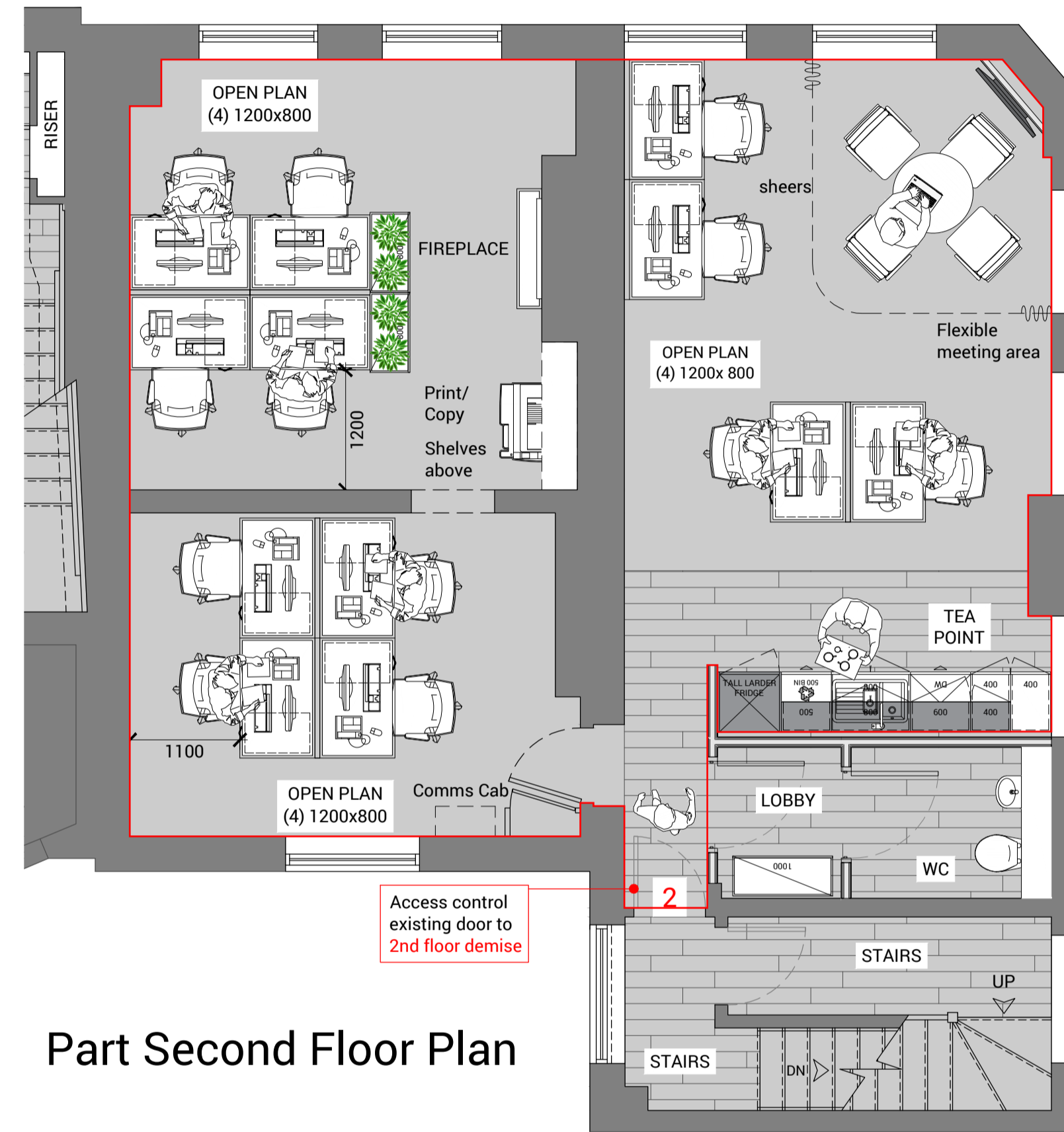


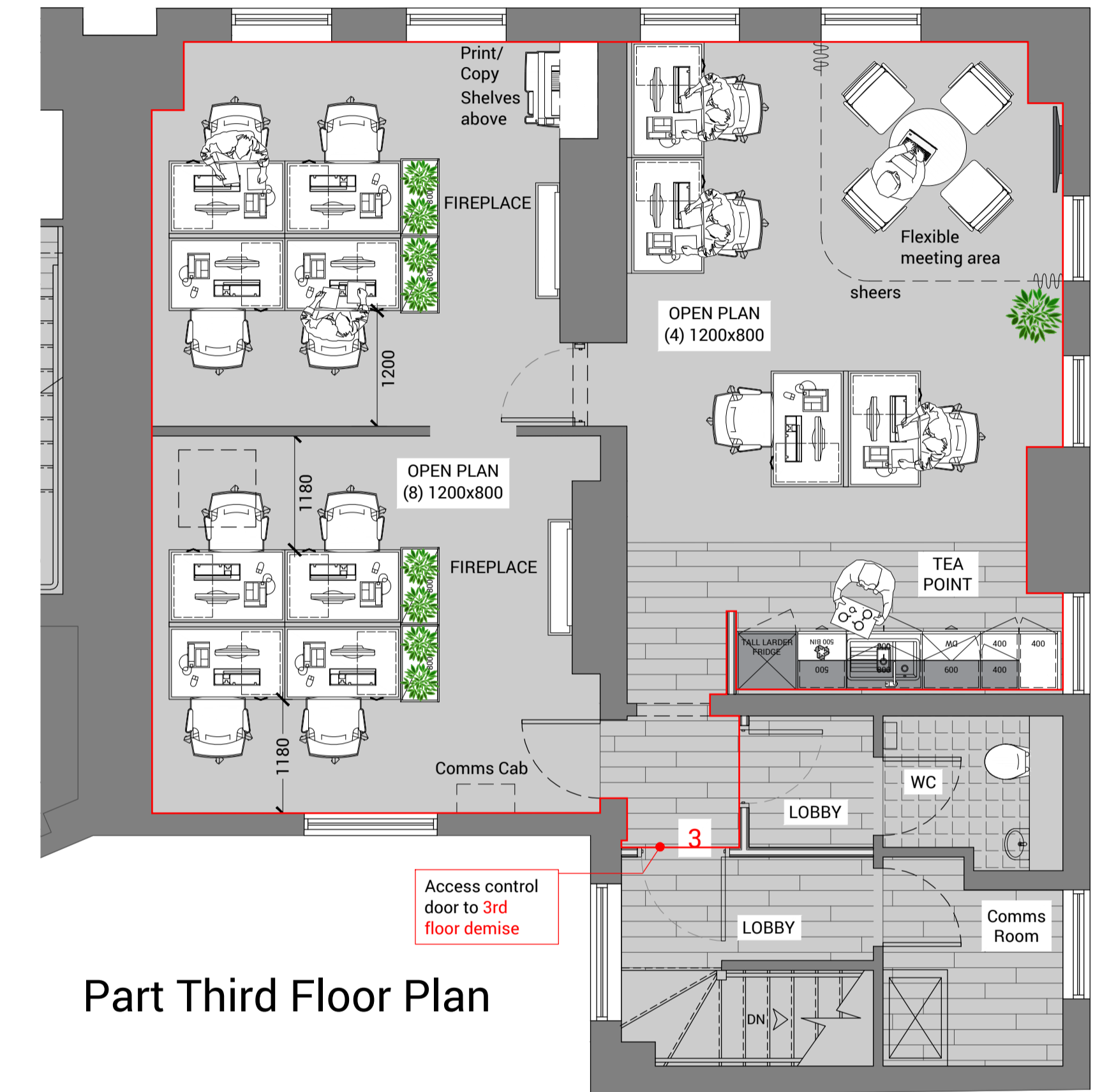
Part Ground Floor Plan



Part First Floor Plan



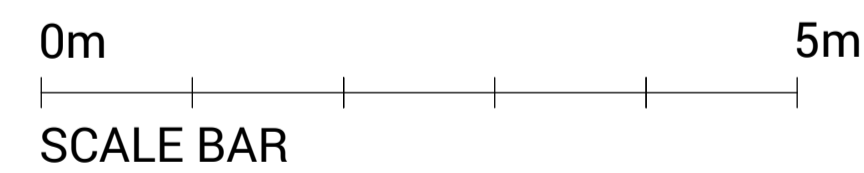
Part Second Floor Plan



Part Third Floor Plan

Proposed Layout - Ground/1st/2nd/3rd Floor

Address: 15 - 17 Heddon Street, Mayfair, London, W1B 4BF
 approx area : 222 m² /2,389 ft²



Client THE CROWN ESTATE	Drawing Title PROPOSED GENERAL ARRANGEMENT PLANS (15-17)				Key:
Client Contact	Account Manager TG				
Site Address 15-17, 19, 23, 29 HEDDON STREET MAYFAIR, LONDON, W1B 4BF	Designer/Project Manager JW				
Scale 1:50@A1	Drawn by TS	First drawing date 23-01-20			
Contract No. 19109	Dwg. No. 03	Floor G/1/2/3	Detail GA (15-17)	Revision D	

Rev	Descriptive Amendments	Drawn by	Date	Rev	Descriptive Amendments	Drawn by	Date
A	Generally Updated	TS	12-03-20				
B	Generally Updated	TS	11-05-20				
C	Updated to show separate demises	TS	12-08-20				
D	First floor communal WC to shower	TS	20-08-20				

Duke Street House
 50 Duke Street
 London
 W1K 6JL

T: +44 (0) 203 930 3810
 www.arkecreative.co.uk

NOTES: This drawing is the exclusive Copyright of ARKE CREATIVE and may not be copied or handed to any third parties without prior consent. All dimensions must be checked on site and not scaled from the drawing. All drawings and proposals are subject to approvals by statutory authorities